


**START
BAHN**

29



**Research and
experimentation
in Switzerland
Innovation Park
Zurich**



**Startbahn 29
brings science
to life for
young people.**

Startbahn 29: Where ideas take off

In the inspirational environment of the Innovation Park Zurich, right next to Runway 29 on the Dübendorf Airfield, the way is being paved for young ideas. Working side-by-side with real scientists, children and youth can develop a deep fascination for science and technology.

The digital challenge

Today, more than ever before, our world is characterised by rapid technological advances. Switzerland is at the cutting edge of these advancements. In the Canton of Zurich, innovations are being developed every day. Think robots helping people, drones constructing houses, or nanobots travelling through the human body and performing operations — once the thing of science fiction movies, now a not-too-distant reality.

The next generation's role

These new technologies not only offer great opportunities, they also harbour potential risks. This is why the young adults of tomorrow need to know more than simply how to use these technologies, they need to be able to understand and question them too. If they can master this new knowledge and know how to apply it, they will be in a position to act responsibly.

MINT fields as key skills

As technological applications find ever-increasing use in all areas of life, the so-called MINT subjects grow in importance. It is vital that these subjects be promoted early on and continuously so that young people can develop valuable skills in these areas.

MINT

MINT stands for mathematics, informatics, natural sciences and technology (comparable to STEM in English, which stands for science, technology, engineering and mathematics).

Innovation Park Zurich

Located on the Dübendorf Airfield, the Innovation Park Zurich is a new platform for research, development and innovation. It is where theory meets practice, where knowledge meets experience — and where renowned Zurich universities and research institutes are teaming up with leading corporations, SMEs and start-ups. Its aim is to encourage and facilitate the transfer of research results into marketable products and services.



1

Awaken a fascination for science and technology

Startbahn 29 is opening the doors of the Innovation Park Zurich to young people and is bringing the fascinating worlds of research, development and innovation to life.

2

Give young explorers tools for the future

By providing children and youth the opportunity to get some real hands-on experience and direct access to the latest research, they can delve deeper into their favourite subject areas, conduct experiments, learn resourcefulness and determination, implement their own ideas, become acquainted with the high-tech world, and discover their own strengths.

3

Foster skills and a sense of responsibility

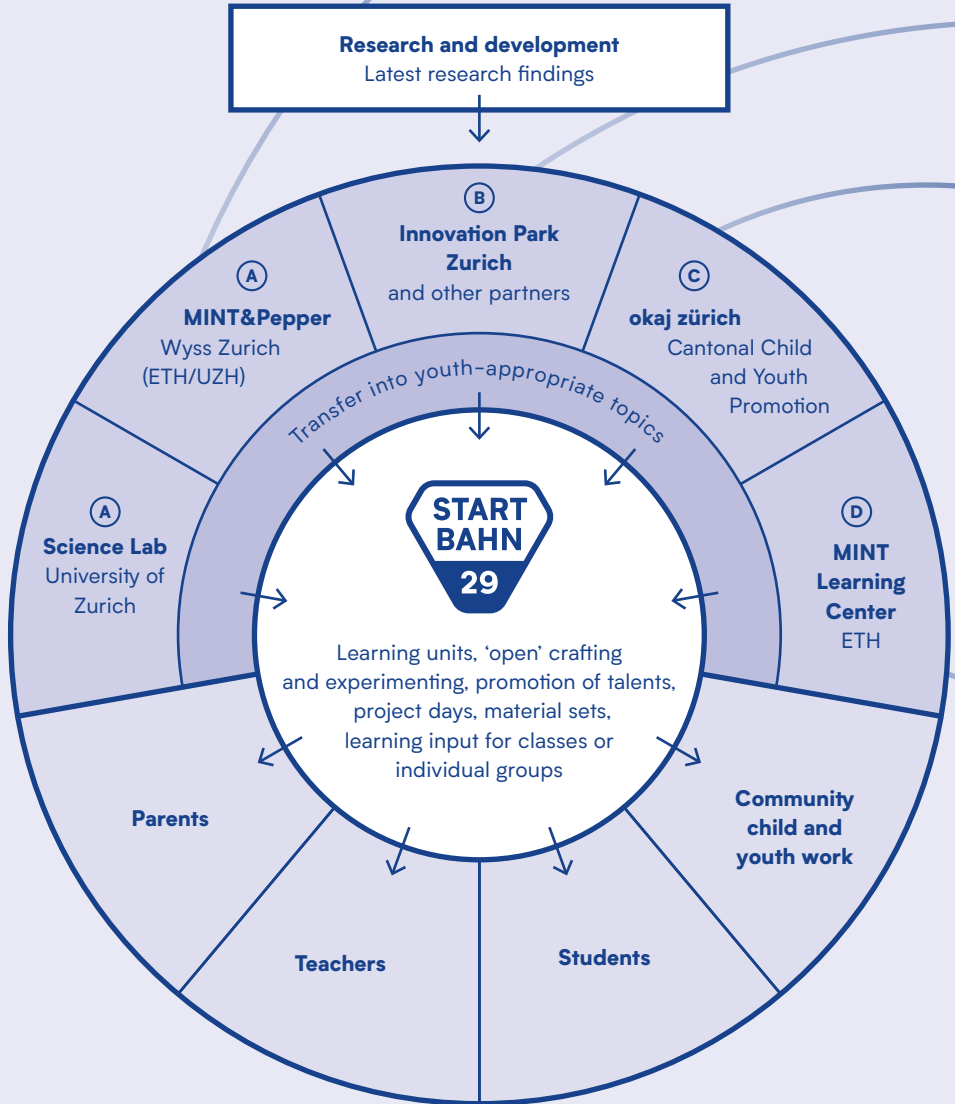
Startbahn 29 promotes the responsible use of new technologies and raises awareness of the associated opportunities and risks. It fosters interdisciplinary thinking and encourages debate on ethical and social issues that arise in connection with such technologies.

Our approach

Startbahn 29

Ideas workshop and experiments lab

In a unique place of learning, an experiments lab is being established to interface with research and provide access to a high-tech infrastructure, such as the realm of robotics at ETH Zurich. Children and youth, as well as young adults, will be given the opportunity to discover the fascinating world of science. With the help of experienced specialists, they'll get to develop and implement their own ideas. Teachers, youth workers and other interested parties can also draw on the expertise of these specialists to help with experiments in their schools or communities. The project will make a major contribution to the early, ongoing and gender-equal promotion of the MINT fields.



Complex topics from the fields of research and development are continuously being transformed into more child and youth-friendly formats.

These are then packaged into the Startbahn 29 workshops and learning units.

(A)

Research and development

Project and skills-based learning using the latest research findings — developed by the University of Zurich and ETH Zurich.

(C)

Startbahn 29 Lab

An 'open' laboratory offers the opportunity to conduct experiments and develop ideas under the expert guidance of scientists.

(B)

Window to research

Wide range of workshops, direct contact with research teams, short lectures in the Innovation Park Zurich.

(D)

Courses based on learning research

Courses on physics, chemistry, biology and mathematics offered by the MINT Learning Center at ETH Zurich. The course content is developed in line with the latest findings from research on learning and instruction.

Thoughts on the project

“The complementary learning programme being provided by Startbahn 29 is incredibly worthwhile and I’m delighted ETH Zurich is on board with its expertise.”

Sarah M. Springman,
Engineer and Rector of
ETH Zurich



“When it comes to digitalisation, Switzerland is streets ahead. In order to keep it that way, it’s imperative that we invest in young people.”

Ruedi Noser,
Businessman and Member of
Council of States





“What a great opportunity for young people to be able to discover through research the fascinating world of MINT.”

Michael O. Hengartner,
President of University
of Zurich

“Young people are being given the chance to grasp the mechanisms and interdependencies of our complex information society.”

Elsbeth Stern,
Intelligence Researcher and Professor
for Research on Learning and Instruction
at ETH Zurich



Broad-based support

Project founders

The Startbahn 29 project is a joint initiative, launched by schools in the vicinity of the Innovation Park Zurich, as well as by the City of Dübendorf, ETH Zurich, the University of Zurich and a number of other interested parties.

ETH zürich



**Universität
Zürich** UZH



Stadt
Dübendorf



Sekundarschule
Dübendorf-Schwerzenbach



Gemeinde
Wangen-Brüttisellen



Schule Fällanden
Fällanden Benglen Pfaffhausen

Susanne Hänni

Chair of School Governing Board, Primary School / City Councillor, Dübendorf

Ralph Schumacher

Head of MINT Learning Center, ETH Zurich

Patrick Ehrismann

School Principal, Uster Cantonal School / Delegate for Conference of School Leaders of Zurich Cantonal Schools

Beatrice Gallin

Chair of School Governing Board / Municipal Councillor, Egg

Roland Rüegg

Representative for Child and Youth Promotion, Egg / President of okay zürich, Cantonal Child and Youth Promotion

Uwe Betz-Moser

Chair of School Governing Board / Municipal Councillor, Wangen-Brüttisellen

Stefan Bertschi

Deputy Head of Robotics Platform, Wyss Zurich / Project Manager, MINT&Pepper, ETH/UZH

Patrick Frei

Biochemist / Secondary School Teacher, Fällanden

Walter Stämpfli / Adrian Sartory

Members of School Governing Board, Wangen-Brüttisellen

Ariane Egli

Vice Chair of School Governing Board, Secondary School, Dübendorf-Schwerzenbach

Martin Tischhauser

Former School Principal, Dübendorf-Schwerzenbach / Board Member of Zurich Teachers' Union (SekZH)

Francesca Stockmann

Member of School Governing Board, Primary School, Dübendorf

Katharina Gasser

Teacher for Talent Promotion, Primary School, Dübendorf

Daniel Kiper

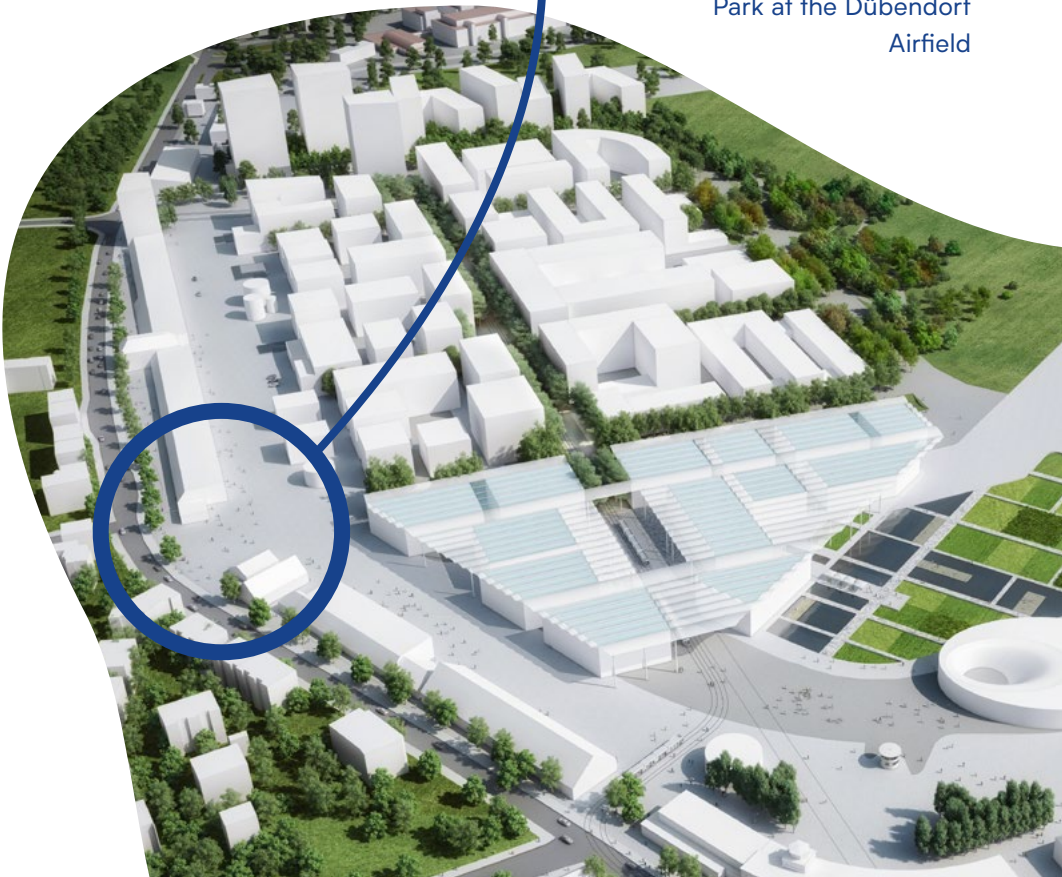
Chair of School Governing Board, Primary School, Greifensee / Head of Life Science Zurich Learning Center, UZH/ETH

Désirée Anja Jäger

Head of Science Lab, University of Zurich

**Proposed
location of
Startbahn 29**

Future Innovation
Park at the Dübendorf
Airfield



Invest in the future

Together we'll get the Startbahn 29 project off the ground!

Startbahn 29 is currently in its start-up phase. In order for the project to be up and running as planned in autumn 2019, we are in need of financial support. Please help us in preparing the younger generation for a digital future.

We would be delighted to hear from you:

Susanne Hänni
President, Startbahn 29
079 377 26 16
susanne.haenni@startbahn29.ch

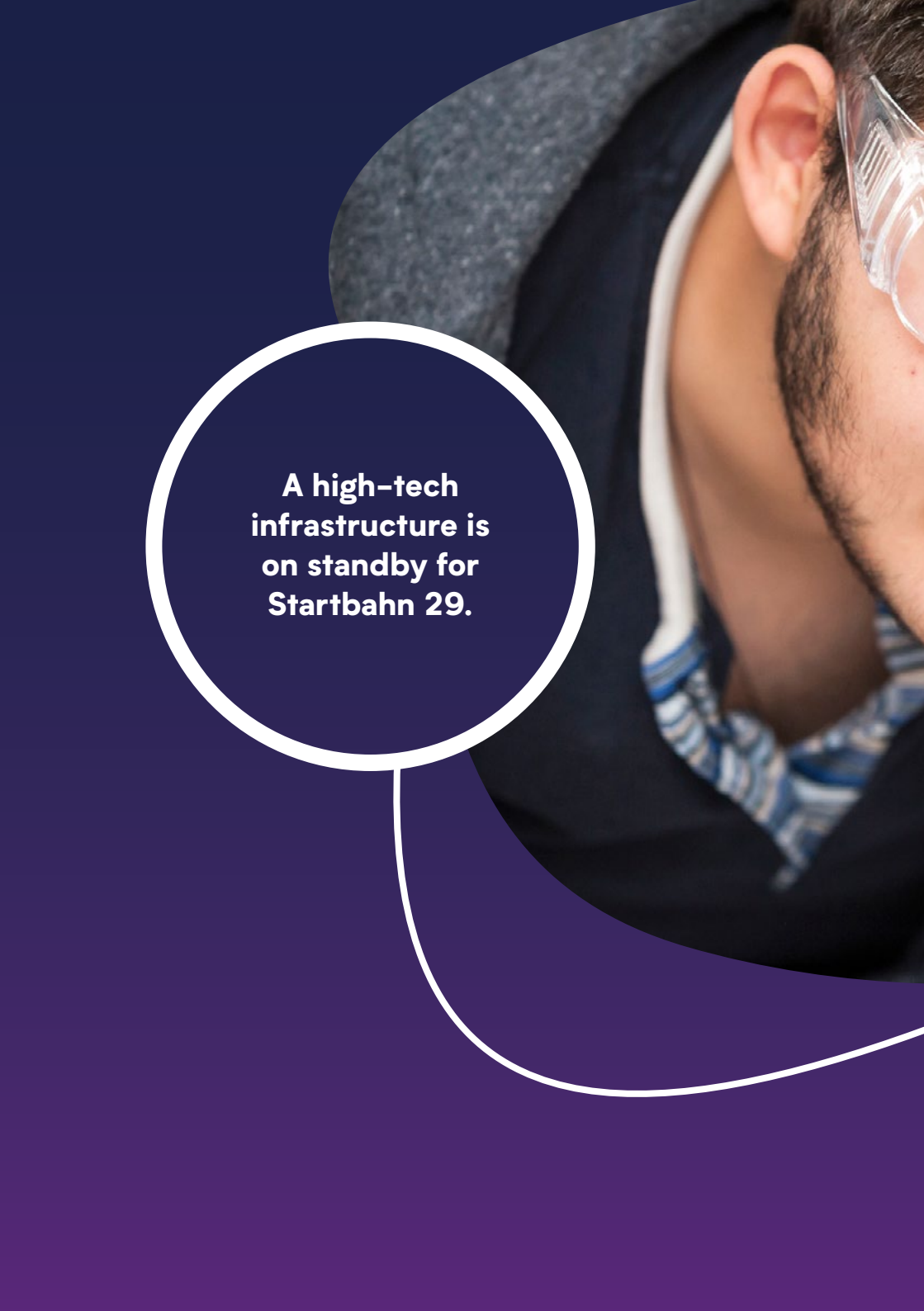
Beatrice Gallin
Board Member, Startbahn 29
078 713 33 79
beatrice.gallin@startbahn29.ch

Verein Startbahn 29, 8600 Dübendorf
IBAN: CH78 0070 0110 0073 4181 6



www.startbahn29.ch

Subscribe to our
newsletter



**A high-tech
infrastructure is
on standby for
Startbahn 29.**



**The digital
world needs a
clued-up
generation.**

Startbahn 29
Innovationspark
Dübendorf
www.startbahn29.ch